

3
BED

Well Presented Bungalow in Desirable Location

23, Friars Avenue, Peacehaven, BN10 8PS



Price £375,000

Freehold

phillipmann
we do more

www.phillipmann.com

23 Friars Avenue, BN10 8PS

Approximate Gross Internal Floor Area = 77.61 sq m / 835 sq ft

Garage Area = 11.67 sq m / 126 sq ft

Total Area = 89.28 sq m / 961 sq ft

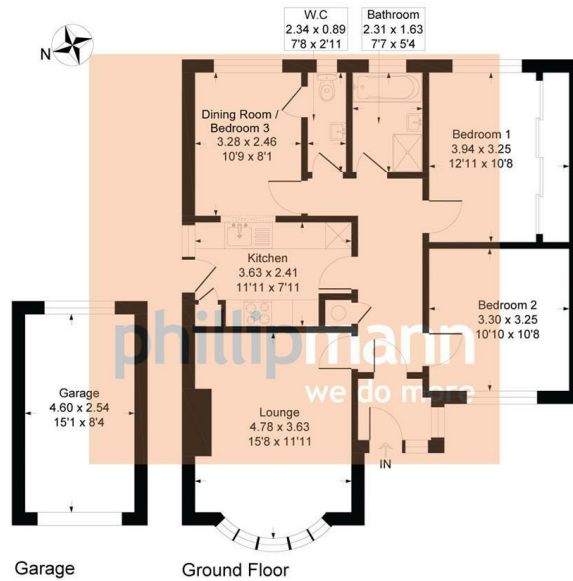


Illustration for identification purposes only, measurements are approximate, not to scale

inbrief...

We are delighted to present this charming three-bedroom detached bungalow, ideally positioned on the sought-after south side of the coast road, just a stone's throw from the cliff-top promenade. This enviable location offers breathtaking coastal walks and far-reaching views across the iconic Sussex coastline, while remaining conveniently close to local shops, well-regarded schools, and regular bus routes connecting Eastbourne and Brighton.

From the outset, the property makes a lasting impression, showcasing character and kerb appeal. An enclosed porch provides a practical space for coats and footwear before entering the welcoming entrance hall, which offers access to all principal rooms, useful storage, and a loft hatch with pull-down ladder.

The lounge is tastefully decorated and well-proportioned, featuring a charming fireplace and bay window that floods the room with natural light, creating a warm and inviting atmosphere. The adjacent kitchen is fitted with a range of wall and base units, complemented by contrasting work surfaces and space for appliances, with a door providing access to both the front and rear gardens.

There are three versatile bedrooms, two of which are generous doubles located to the south side of the property, offering ample space for furnishings. The third bedroom, currently arranged as a dining room, overlooks the rear garden. A family bathroom fitted with a bath, separate shower cubicle, and wash basin is complemented by a separate WC.

Externally, the sunny rear garden offers excellent potential, featuring a large lawn, mature planted borders, an outside tap, and side access. To the front, a low-maintenance garden is enhanced by mature shrubs, alongside off-street parking and a shared driveway leading to the garage.



Council Tax Band - D
EPC Rating - D

moreinfo...

Phillip Mann Peacehaven Office
226-230 South Coast Road, Peacehaven, BN10 8JR
01273 586622



To see more details on this & all our homes go to www.phillipmann.com